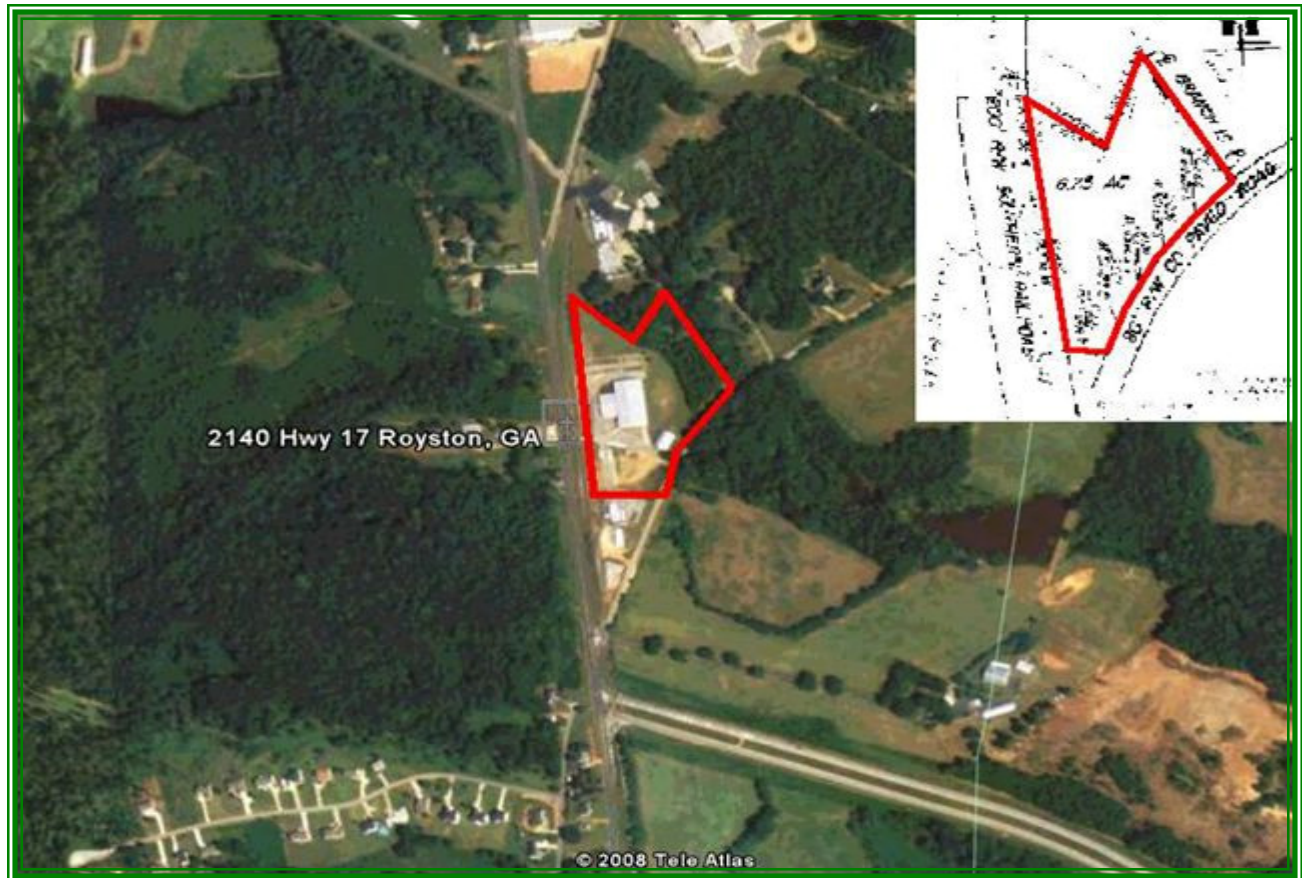


Harbin - Royston



Total Acreage	6.75 ac	Power	Georgia Power Co.
Ceilings	Whs 21-25' / Display 14-18'	Gas	Royston Natural Gas
Building Size	TTL 26,000 sq.ft	Water	8" City of Royston
Access	Fronts Hwy.17/10 mi to I-85 Fronts Hartwell Rail Road	Sewer	NA / Septic System

For more information, contact Lyn Brumby Allen at (706) 384-5112.

"Where You Want To Invest"